

2020 KS1 School Dashboard

for governors & school leaders

Produce custom dashboards
at fftaspire.org

Sacred Heart Primary School

LA Newcastle upon Tyne DfE 3913662 Produced August 2020 Version 1

What it is

Seven easy-to-use reports that help governors and school leaders to evaluate school performance using the latest 2019 DfE school performance indicators.

What it tells you

What are the strengths, areas for improvement and under-performing groups of pupils

How does attainment and pupil progress compare to the national average over the last three years?

How are you performing in different subjects?

Important for 2020

2020 data has been calculated using the teacher assessment data uploaded by schools who participated in the 2020 FFT Results Service. **The data is for internal use only and is NOT intended to be used for external accountability.**

With no test data available, this year's TA analysis should also be treated with additional care, especially when comparing to data from previous years. The 'national' comparator has been generated using the data supplied by participating schools. Please take this into account when analysing your school's data.

About the data shown

1 2 3

Actual results

Actual results for your school, using a range of measures such as averages and thresholds.



Gauges

These display headline indicators and whether actual results and pupils' progress are in line with, or significantly above or below, the national average.

ESTIMATED



1 2 3

Pupil progress

The value added progress that your pupils have made from one key stage to the next. FFT compares your actual results to the estimated results based on the progress of similar pupils nationally.



Statistical significance

Green plus signs and red minus signs highlight where either actual results or pupils' progress is significantly above or below the national average.



Trends

The dashboard analyses school performance over 3-5 years. Any significant year-on-year improvement is highlighted using an up arrow. Significant declines in performance are highlighted with a down arrow.



Strengths & weaknesses

These highlight key pupil groups and subjects where progress is above or below the national average.

Working in partnership with

Premier partner

National
Governors'
Association

Data sources

2020 data has been calculated using the teacher assessment data uploaded by schools who participated in the 2020 FFT Results Service.

2020 self-evaluation reports have been calculated using the teacher assessments provided by schools as part of the FFT Results Service. ?

Sacred Heart Primary School

2020 KS1

Overview

KS1 Attainment 2020 · Actual results

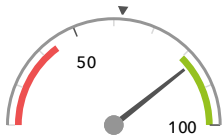
30 pupils

% Expected Standard + (Re, Wr, Ma)

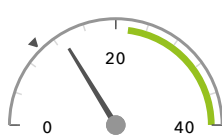
% Higher Standard (Re, Wr, Ma)

83%+

13%



Significantly above the national average (62%) ◀



In line with the national average (10%) ◀

KS1 Progress 2020 · Value Added

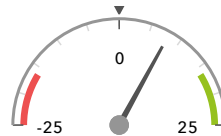
30 matched pupils

% Expected Standard + (Re, Wr, Ma)

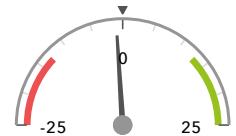
% Higher Standard (Re, Wr, Ma)

+8%

-1%



In line with the national average (0%) ◀



In line with the national average (0%) ◀

KS1 higher and lower performing pupil groups 2020

Minimum group size: 5

	Higher performing	Lower performing
Overall achievement pupil progress	Female (16) Higher attainers (20) Autumn Term (13) ↓	Middle attainers (6) Male (14) ↓ FSM (5)
KS1 reading achievement pupil progress	Female (16)	Middle attainers (6) Male (14) White (20)
KS1 writing achievement pupil progress	Female (16) Spring Term (5) FSM (in last 6 years) (6)	Middle attainers (6) Male (14) White (20)
KS1 mathematics achievement pupil progress	Female (16) Autumn Term (13) Higher attainers (20)	Spring Term (5) Middle attainers (6) Male (14)

2020 self-evaluation reports have been calculated using the teacher assessments provided by schools as part of the FFT Results Service. ?

Sacred Heart Primary School

2020 KS1

Attainment & progress

KS1 Attainment 2020

30 pupils

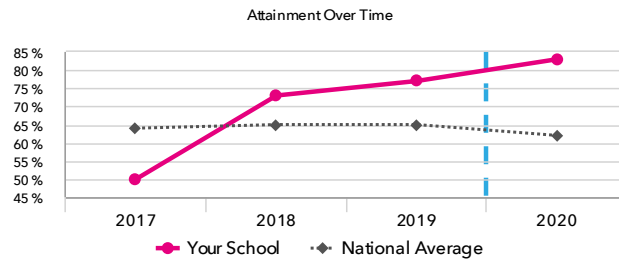
% Expected Standard + (Re, Wr, Ma)

83%+

FFT Rank



Significantly above the national average (62%)



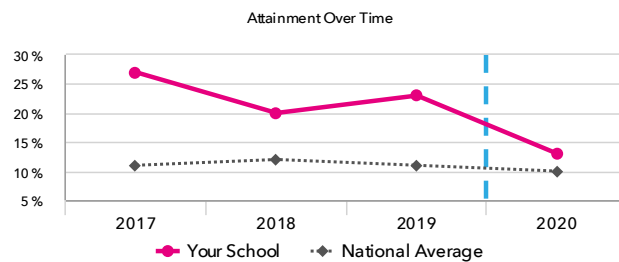
% Higher Standard (Re, Wr, Ma)

13%

FFT Rank



In line with the national average (10%)



KS1 Progress 2020

30 matched pupils

% Expected Standard + (Re, Wr, Ma)

+8%

FFT Rank



In line with the national average (0%)

% Higher Standard (Re, Wr, Ma)

-1%

FFT Rank



In line with the national average (0%)

KS1 performance summary

	Actual results			Pupil progress		
	2018	2019	2020	2018	2019	2020
Number of Pupils / % Matched	30	30	30	100%	100%	100%
% Expected Standard + (Re, Wr, Ma)	73%	77%	83%+	+0%	+10%	+8%
% Higher Standard (Re, Wr, Ma)	20%	23%+	13%	+6%	+12%+	-1%
% Expected Standard + Reading	83%	83%	87%	+2%	+8%	+4%
% Higher Standard Reading	37%	33%	23%	+5%	+6%	-6%
% Expected Standard + Writing	77%	77%	83%	-0%	+6%	+5%
% Higher Standard Writing	37%+	27%	17%	+18%+	+12%	-1%
% Expected Standard + Maths	83%	83%	87%	+1%	+8%	+3%
% Higher Standard Maths	33%	37%	23%	+6%	+15%	-2%

2020 self-evaluation reports have been calculated using the teacher assessments provided by schools as part of the FFT Results Service. ?

Sacred Heart Primary School

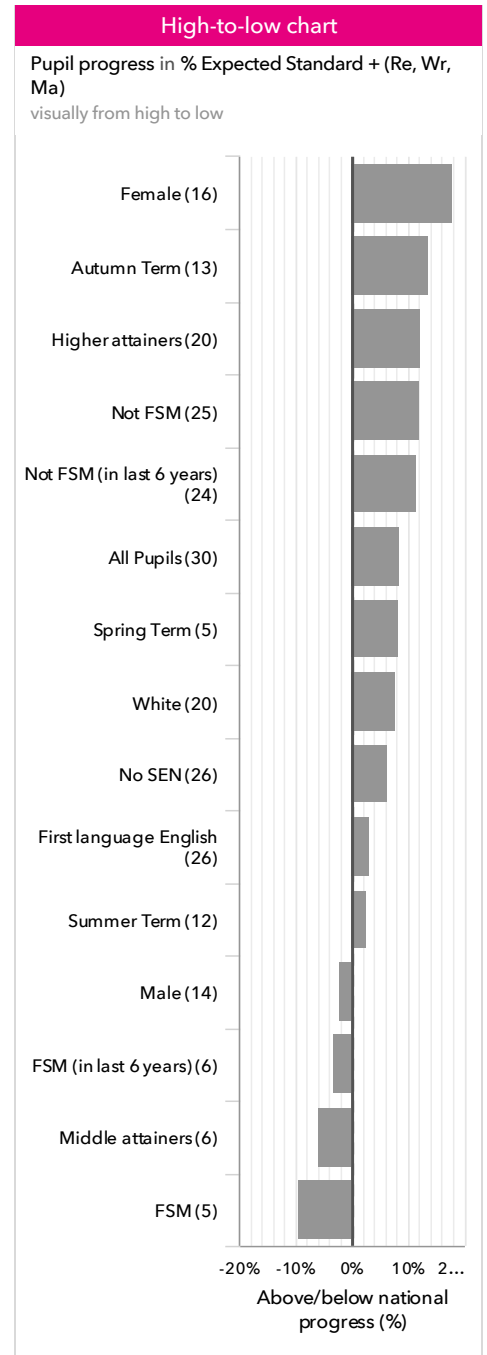
2020

KS1

Pupil groups

KS1 Pupil groups performance 2020

			Actual results		Pupil progress	
	Pupils		% Expected Standard + (Re, Wr, Ma)	% Higher Standard (Re, Wr, Ma)	% Expected Standard + (Re, Wr, Ma)	% Higher Standard (Re, Wr, Ma)
Summary	All Pupils	30	83% ⬆	13%	+8%	-1%
Gender	Male	14	64%	0%	-2%	-8%
	Female	16	100% ⬆	25%	+18%	+6%
Prior Attainment	Higher attainers	20	100%	20%	+12%	+0%
	Middle attainers	6	67%	0%	-6%	-4%
	Lower attainers	4	25%	0%	+11%	-0%
Pupil Premium	FSM (in last 6 years)	6	67%	17%	-3%	+4%
	Not FSM (in last 6 years)	24	88% ⬆	13%	+11%	-2%
FSM	FSM	5	60%	20%	-9%	+5%
	Not FSM	25	88% ⬆	12%	+12%	-2%
Term of Birth	Summer Term	12	67%	8%	+3%	+0%
	Spring Term	5	80%	0%	+8%	-9%
	Autumn Term	13	100% ⬆	23%	+14%	+2%
SEN Group	SEN Support	4	50%	0%	+21%	-2%
	No SEN	26	88% ⬆	15%	+6%	-0%
EAL	First language not English	3	100%	0%	+47%	-3%
	First language English	26	81%	15%	+3%	-0%
Ethnicity	White	20	85% ⬆	5%	+8%	-6%
	Black African	4	50%	0%	-15%	-9%
	Indian	2	100%	50%	+16%	+18%
	Other Asian	2	100%	0%	+58%	-2%
	Any Other	2	100%	100%	+3%	+50%



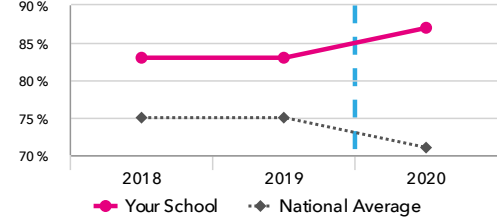
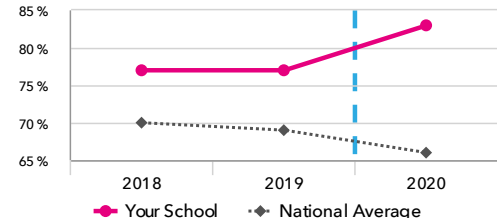


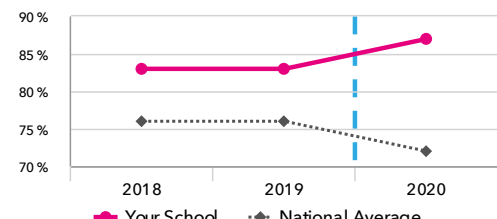
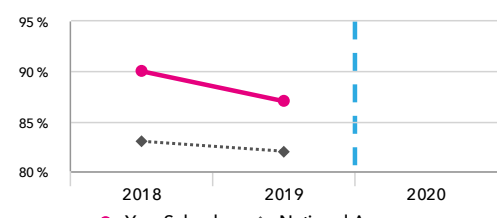
2020 self-evaluation reports have been calculated using the teacher assessments provided by schools as part of the FFT Results Service. ?

Sacred Heart Primary School

2020 KS1

Subjects

KS1 subject performance 2020

	Actual results			Pupil progress			Actual results over time
	2018	2019	2020	2018	2019	2020	
Number of Pupils / % Matched	30	30	30	100%	100%	100%	
Reading							% Expected Standard + Reading
% Expected Standard +	83%	83%	87%	+2%	+8%	+4%	
% Higher Standard	37%	33%	23%	+5%	+6%	-6%	
Writing							% Expected Standard + Writing
% Expected Standard +	77%	77%	83%	-0%	+6%	+5%	
% Higher Standard	37% 	27%	17%	+18% 	+12%	-1%	
Maths							% Expected Standard + Maths
% Expected Standard +	83%	83%	87%	+1%	+8%	+3%	
% Higher Standard	33%	37%	23%	+6%	+15%	-2%	
Science							% Expected Standard + Science
% Expected Standard +	90%	87%	-	-	-	-	

2020 self-evaluation reports have been calculated using the teacher assessments provided by schools as part of the FFT Results Service. ?

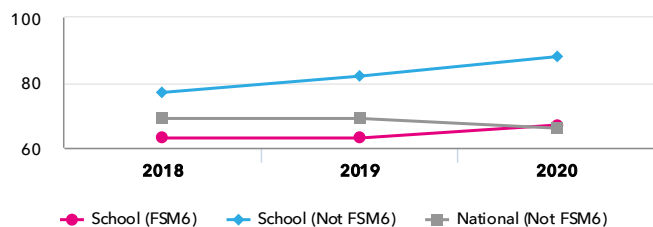
Sacred Heart Primary School

2020 KS1

Disadvantaged pupils

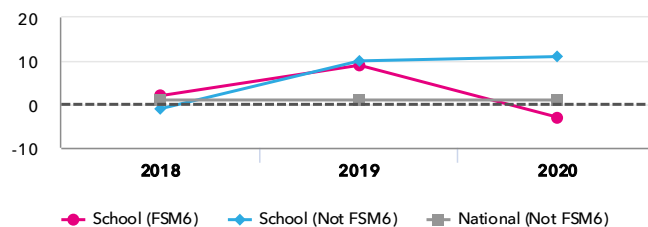
KS1 attainment for disadvantaged pupils 2020

% Expected Standard + (Re, Wr, Ma)



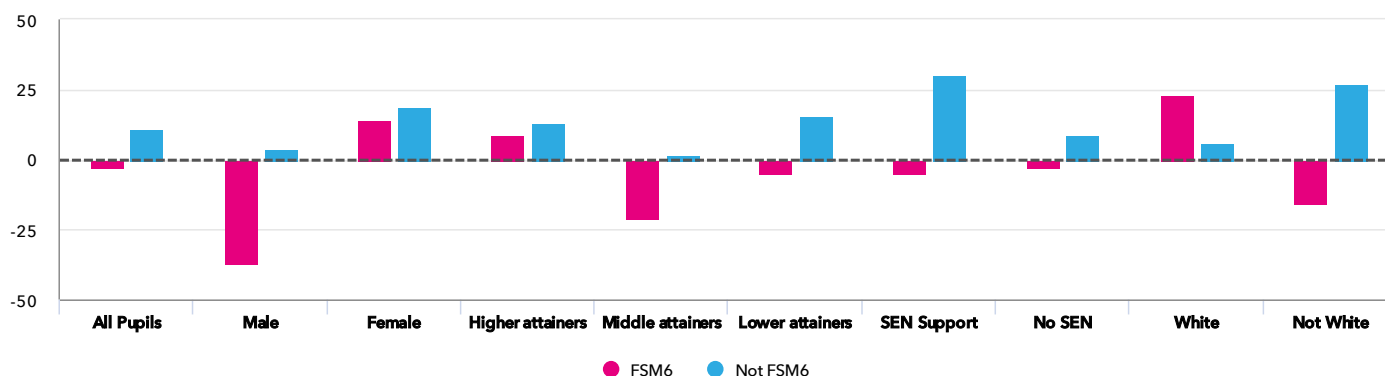
KS1 progress for disadvantaged pupils 2020

% Expected Standard + (Re, Wr, Ma)



Progress gap

% Expected Standard + (Re, Wr, Ma)



Attainment & progress

				Attainment			Progress		
				% Expected Standard + (Re, Wr, Ma)			% Expected Standard + (Re, Wr, Ma)		
	Pupils	FSM6	Not FSM6	FSM6	Not FSM6	Gap	FSM6	Not FSM6	Gap
Summary	All Pupils	6	24	67%	88% +	-21%	-3%	11%	-14%
Gender	Male	2	12	0%	75%	-75%	-37%	4%	-41%
	Female	4	12	100%	100%	0%	14%	19%	-5%
Prior Attainment	Higher attainers	3	17	100%	100%	0%	9%	13%	-4%
	Middle attainers	2	4	50%	75%	-25%	-21%	2%	-23%
	Lower attainers	1	3	0%	33%	-33%	-5%	16%	-21%
SEN Group	SEN Support	1	3	0%	67%	-67%	-5%	30%	-35%
	No SEN	5	21	80%	90%	-10%	-3%	9%	-12%
Ethnic Group	White	2	18	100%	83%	17%	23%	6%	17%
	Not White	4	6	50%	100%	-50%	-16%	27%	-43%

2020 self-evaluation reports have been calculated using the teacher assessments provided by schools as part of the FFT Results Service. ?

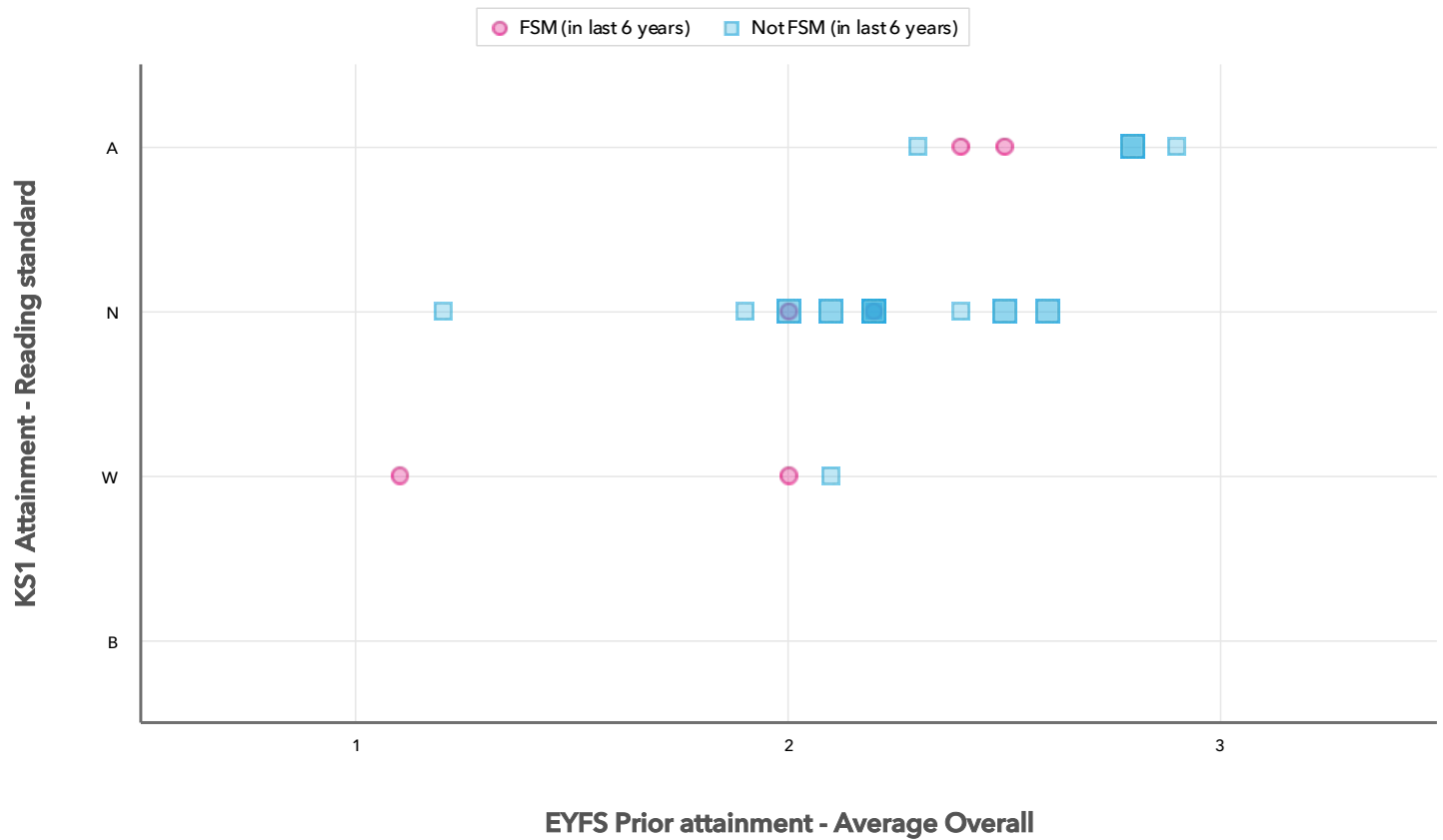
Sacred Heart Primary School

2020

KS1

Scatterplot

KS1 Pupil scatterplot 2020 30 pupils highlighted by Pupil Premium ▼



Context data has been produced using either the data supplied by schools as part of the FFT 2020 Results Service or from the latest census data provided by the DfE. [?](#)

Sacred Heart Primary School

2020

KS1

Context

Context · Year 2

		Pupils	Comparative profile 2019 / 2020		Absence during Key Stage 1		Persistent absence during Key Stage 1	
		School	School	National	School	National	School	National
Summary	All Pupils	30	100%	100%	-	-	-	-
Gender	Male	14	47%	51%	-	-	-	-
	Female	16	53%	49%	-	-	-	-
Prior Attainment	Higher attainers	20	67%	33%	-	-	-	-
	Middle attainers	6	20%	35%	-	-	-	-
	Lower attainers	4	13%	28%	-	-	-	-
Pupil Premium	FSM (in last 6 years)	6	20%	24%	-	-	-	-
	Not FSM (in last 6 years)	24	80%	76%	-	-	-	-
FSM	FSM	5	17%	22%	-	-	-	-
	Not FSM	25	83%	77%	-	-	-	-
Term of Birth	Summer Term	12	40%	34%	-	-	-	-
	Spring Term	5	17%	32%	-	-	-	-
	Autumn Term	13	43%	34%	-	-	-	-
SEN Group	SEN Support	4	13%	13%	-	-	-	-
	No SEN	26	87%	85%	-	-	-	-
EAL	First language not English	3	10%	25%	-	-	-	-
	First language English	26	87%	74%	-	-	-	-
Ethnicity	White	20	67%	67%	-	-	-	-
	Black African	4	13%	6%	-	-	-	-
	Indian	2	7%	3%	-	-	-	-
	Other Asian	2	7%	4%	-	-	-	-
	Any Other	2	7%	5%	-	-	-	-