

2020 KS2 School Dashboard

for governors & school leaders

Produce custom dashboards at fftaspire.org

Sacred Heart Primary School

LA Newcastle upon Tyne DFE 3913662 Produced August 2020 Version 1

What it is

Seven easy-to-use reports that help governors and school leaders to evaluate school performance using the latest 2019 DFE school performance indicators.

What it tells you

- What are the strengths, areas for improvement and under-performing groups of pupils
- How does attainment and pupil progress compare to the national average over the last three years?
- How are you performing in different subjects?

Important for 2020

2020 data has been calculated using the teacher assessment data uploaded by schools who participated in the 2020 FFT Results Service. **The data is for internal use only and is NOT intended to be used for external accountability.**

With no test data available, this year's TA analysis should also be treated with additional care, especially when comparing to data from previous years. The 'national' comparator has been generated using the data supplied by participating schools. Please take this into account when analysing your school's data.

About the data shown

1 2 3

Actual results

Actual results for your school, using a range of measures such as averages and thresholds.



Gauges

These display headline indicators and whether actual results and pupils' progress are in line with, or significantly above or below, the national average.

ESTIMATED



1 2 3

Pupil progress

The value added progress that your pupils have made from one key stage to the next. FFT compares your actual results to the estimated results based on the progress of similar pupils nationally.



Statistical significance

Green plus signs and red minus signs highlight where either actual results or pupils' progress is significantly above or below the national average.



Trends

The dashboard analyses school performance over 3-5 years. Any significant year-on-year improvement is highlighted using an up arrow. Significant declines in performance are highlighted with a down arrow.



Strengths & weaknesses

These highlight key pupil groups and subjects where progress is above or below the national average.

Working in partnership with

Premier partner



Data sources

2020 data has been calculated using the teacher assessment data uploaded by schools who participated in the 2020 FFT Results Service.

2020 self-evaluation reports have been calculated using the teacher assessments provided by schools as part of the FFT Results Service. ?

Sacred Heart Primary School

2020 KS2

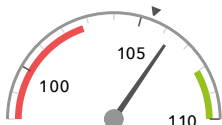
Overview

KS2 Attainment 2020 - Actual results

31 pupils

Average Scaled Score (Re, Ma)

106.3

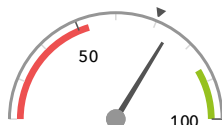


In line with the national average (105.4) ◀

% Expected standard+ (Re, Wr, Ma)

DFE

74%



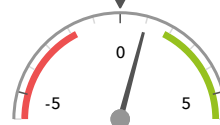
In line with the national average (70%) ◀

KS2 Progress 2020 - Value Added

31 matched pupils

Average Scaled Score (Re, Ma)

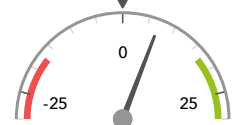
+1.0



In line with the national average (0) ◀

% Expected standard+ (Re, Wr, Ma)

+7%



In line with the national average (0%) ◀

KS2 higher and lower performing pupil groups 2020

Minimum group size: 5

	Higher performing	Lower performing
Overall achievement pupil progress	Summer Term (8) First language not English (10) Middle attainers (19)	FSM (6) FSM (in last 6 years) (6) FSM (ever) (5)
KS2 reading achievement pupil progress	Summer Term (8) First language not English (10) Lower attainers (7)	FSM (6) FSM (in last 6 years) (6) FSM (ever) (5)
KS2 writing achievement pupil progress	First language not English (10) ⊕ No SEN (24) ⊕ Not FSM (25) ⊕	SEN Support (6) FSM (ever) (5) FSM (6)
KS2 mathematics achievement pupil progress	Summer Term (8) Middle attainers (19) First language not English (10)	FSM (6) FSM (in last 6 years) (6) FSM (ever) (5)

2020 self-evaluation reports have been calculated using the teacher assessments provided by schools as part of the FFT Results Service. ?

Sacred Heart Primary School

2020 KS2

Attainment & progress

KS2 Attainment 2020

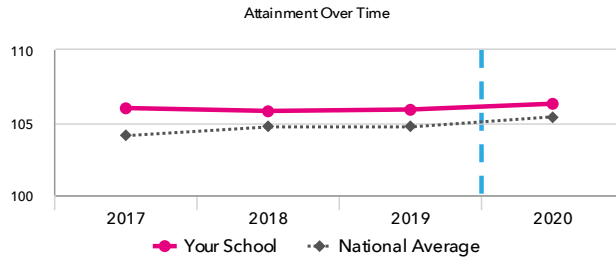
31 pupils

Average Scaled Score (Re, Ma)

106.3



In line with the national average (105.4)

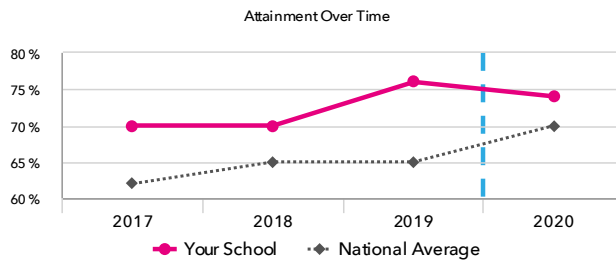


% Expected standard+ (Re, Wr, Ma) DFE

74%



In line with the national average (70%)



KS2 Progress 2020

31 matched pupils

Average Scaled Score (Re, Ma)

+1.0



In line with the national average (0)

% Expected standard+ (Re, Wr, Ma)

+7%



In line with the national average (0%)

KS2 performance summary

	Actual results			Pupil progress		
	2018	2019	2020	2018	2019	2020
Number of Pupils / % Matched	30	29	31	100%	97%	100%
% Expected standard+ (Re, Wr, Ma)	70%	76%	74%	-2%	+21% +	+7%
% Higher standard (Re, Wr, Ma)	13%	10%	26%	+7%	+7% +	+10%
Average Scaled Score (Re, GPS, Ma)	105.9	106.6	106.9	+0.4	+3.5 + ↑	+1.2 ↓
Average Scaled Score (Re, Ma)	105.8	105.9	106.3	+0.5	+3.2 + ↑	+1.0
% Expected standard+ Reading	93% +	79%	87%	+10%	+13%	+8%
% Higher standard Reading	40%	24%	29%	+13%	+9%	+0%
Scaled Score Reading	107.6	104.7	105.9	+1.8	+2.5 +	+0.7
% Expected standard+ Writing	93%	86%	84%	+4%	+8%	+8%
% Higher standard Writing	33%	24%	29%	+14%	+15% +	+9%
Scaled Score Writing	105.5 +	103.8	107.3 ↑	+2.3 +	+2.7 +	+1.7
% Expected standard+ Maths	70%	90%	84%	-13%	+13%	+7%
% Higher standard Maths	20%	34%	39%	+1%	+21% +	+13%
Scaled Score Maths	104.0	107.0	106.7	-0.9	+3.8 + ↑	+1.4 ↓
% Expected standard+ Grammar, Punctuation & Spelling	90%	86%	84%	+2%	+9%	+5%
% Higher standard Grammar, Punctuation & Spelling	30%	45%	39%	-6%	+22% + ↑	+10%
Scaled Score Grammar, Punctuation & Spelling	108.3	107.8	108.2	+1.4	+3.6 +	+1.4
% Expected standard+ Science	77%	79%	-	-	-	-

2020 self-evaluation reports have been calculated using the teacher assessments provided by schools as part of the FFT Results Service. ?

Sacred Heart Primary School

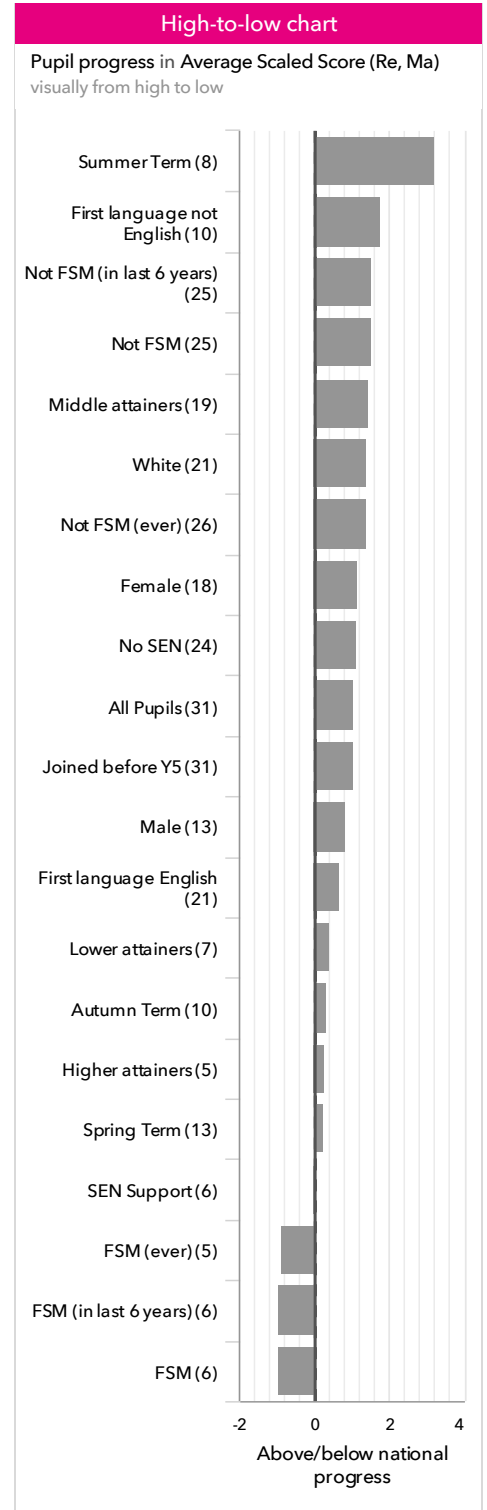
2020

KS2

Pupil groups

KS2 Pupil groups performance 2020

	Pupils	Actual results			Pupil progress			
		Average Scaled Score (Re, Ma)	% Expected standard+ (Re, Wr, Ma) <small>DFE</small>	% Higher standard (Re, Wr, Ma) <small>DFE</small>	Average Scaled Score (Re, Ma)	% Expected standard+ (Re, Wr, Ma)	% Higher standard (Re, Wr, Ma)	
Summary	All Pupils	31	106.3	74%	26%	+1.0	+7%	+10%
Gender	Male	13	106.1	85%	8%	+0.9 ↓	+17%	-3%
	Female	18	106.5	67%	39% +	+1.2	-1%	+20% +
FFT Prior Attainment	Higher attainers	5	113.5	100%	100%	+0.3	+1%	+34%
	Middle attainers	19	107.2	89%	16%	+1.5	+16%	+8%
	Lower attainers	7	98.8	14%	0%	+0.4	-14%	-1%
Pupil Premium	FSM (in last 6 years)	6	103.3	67%	17%	-1.0	+8%	+4%
	Not FSM (in last 6 years)	25	107.0	76%	28%	+1.5	+7%	+12%
FSM	FSM	6	103.3	67%	17%	-1.0	+8%	+4%
	Not FSM	25	107.0	76%	28%	+1.5	+7%	+12%
FSM Ever	FSM (ever)	5	102.9	60%	20%	-0.9	+6%	+7%
	Not FSM (ever)	26	107.0	77%	27%	+1.4	+7%	+11%
Term of Birth	Autumn Term	10	105.8	90%	20%	+0.3	+22%	+10%
	Spring Term	13	106.5	69%	31%	+0.2	-2%	+8%
	Summer Term	8	106.6	63%	25%	+3.2	+2%	+15%
SEN Group	SEN Support	6	103.3	50%	17%	+0.1	-5%	+4%
	EHC Plan	1	109.0	100%	0%	+4.6	+29%	-2%
	No SEN	24	106.9	79%	29%	+1.1	+9%	+12%
EAL	First language not English	10	108.6	90%	40% +	+1.8	+15%	+15%
	First language English	21	105.2	67%	19%	+0.7	+3%	+8%
Mobility	Joined before Y5	31	106.3	74%	26%	+1.0	+7%	+10%
Ethnicity	White	21	106.0	71%	19%	+1.4	+7%	+8%
	Black African	3	102.3	67%	33%	-3.0	+1%	+11%
	Indian	4	108.1	75%	50%	+0.4	-1%	+15%
	Other Asian	3	109.7	100%	33%	+3.3	+25%	+21%



2020 self-evaluation reports have been calculated using the teacher assessments provided by schools as part of the FFT Results Service. ?

Sacred Heart Primary School

2020 KS2

Subjects

KS2 subject performance 2020

	Actual results			Pupil progress			Actual results over time		
	2018	2019	2020	2018	2019	2020			
Number of Pupils / % Matched	30	29	31	100%	97%	100%			
Reading									
% Expected standard+	93% +	79%	87%	+10%	+13%	+8%			
% Higher standard	40%	24%	29%	+13%	+9%	+0%			
Scaled Score	108	105	106	+1.8	+2.5 +	+0.7			
Writing									
% Expected standard+	93%	86%	84%	+4%	+8%	+8%			
% Higher standard	33%	24%	29%	+14%	+15% +	+9%			
Scaled Score	106 +	104	107 ↑	+2.3 +	+2.7 +	+1.7			
Maths									
% Expected standard+	70%	90%	84%	-13%	+13%	+7%			
% Higher standard	20%	34%	39%	+1%	+21% +	+13%			
Scaled Score	104	107	107	-0.9	+3.8 + ↑	+1.4 ↓			
Grammar, Punctuation & Spelling									
% Expected standard+	90%	86%	84%	+2%	+9%	+5%			
% Higher standard	30%	45%	39%	-6%	+22% + ↑	+10%			
Scaled Score	108	108	108	+1.4	+3.6 +	+1.4			
Science									
% Expected standard+	77%	79%	-	-	-	-			

2020 self-evaluation reports have been calculated using the teacher assessments provided by schools as part of the FFT Results Service. ?

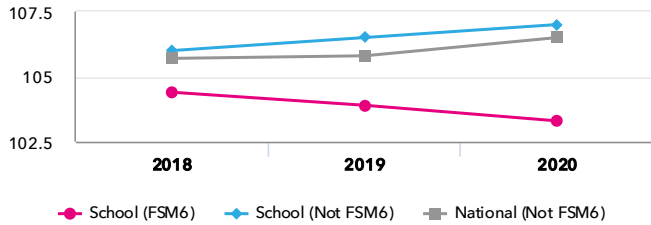
Sacred Heart Primary School

2020 KS2

Disadvantaged pupils

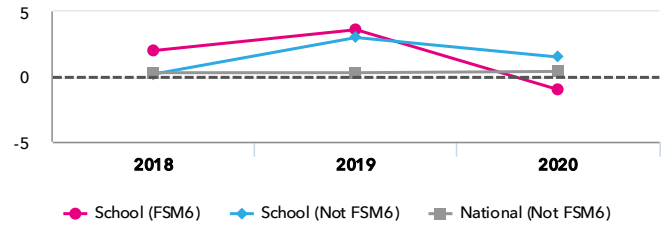
KS2 attainment for disadvantaged pupils 2020

Average Scaled Score (Re, Ma)

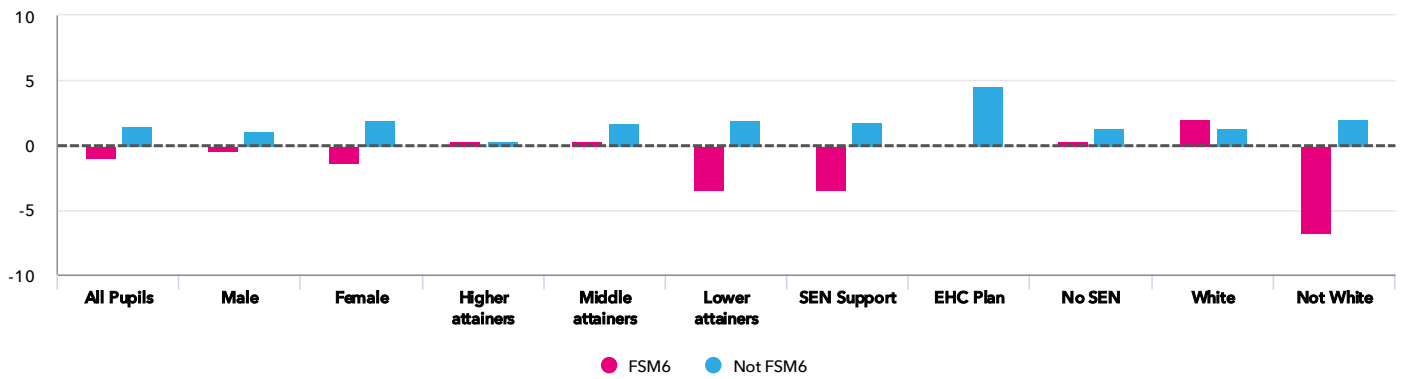


KS2 progress for disadvantaged pupils 2020

Average Scaled Score (Re, Ma)



Progress gap Average Scaled Score (Re, Ma)



Attainment & progress

Pupils	Attainment			Progress					
	FSM6	Not FSM6	Average Scaled Score (Re, Ma)			FSM6	Not FSM6	Gap	
			FSM6	Not FSM6	Gap				
Summary	All Pupils	6	25	103.3	107	-3.7	-1	1.5	-2.5
Gender	Male	2	11	105.5	106.2	-0.7	-0.2	1.1	-1.3
	Female	4	14	102.3	107.7	-5.4	-1.3	1.9	-3.2
FFT Prior Attainment	Higher attainers	1	4	113.5	113.5	0	0.3	0.3	0
	Middle attainers	3	16	105.5	107.5	-2	0.2	1.7	-1.5
	Lower attainers	2	5	95	100.3	-5.3	-3.4	1.9	-5.3
SEN Group	SEN Support	2	4	95	107.5	-12.5	-3.4	1.8	-5.2
	EHC Plan	-	1	-	109	-	-	4.6	-
	No SEN	4	20	107.5	106.8	0.7	0.3	1.3	-1
Ethnic Group	White	4	17	105.5	106.2	-0.7	2	1.3	0.7
	Not White	2	8	99	108.8	-9.8	-6.8	2	-8.8

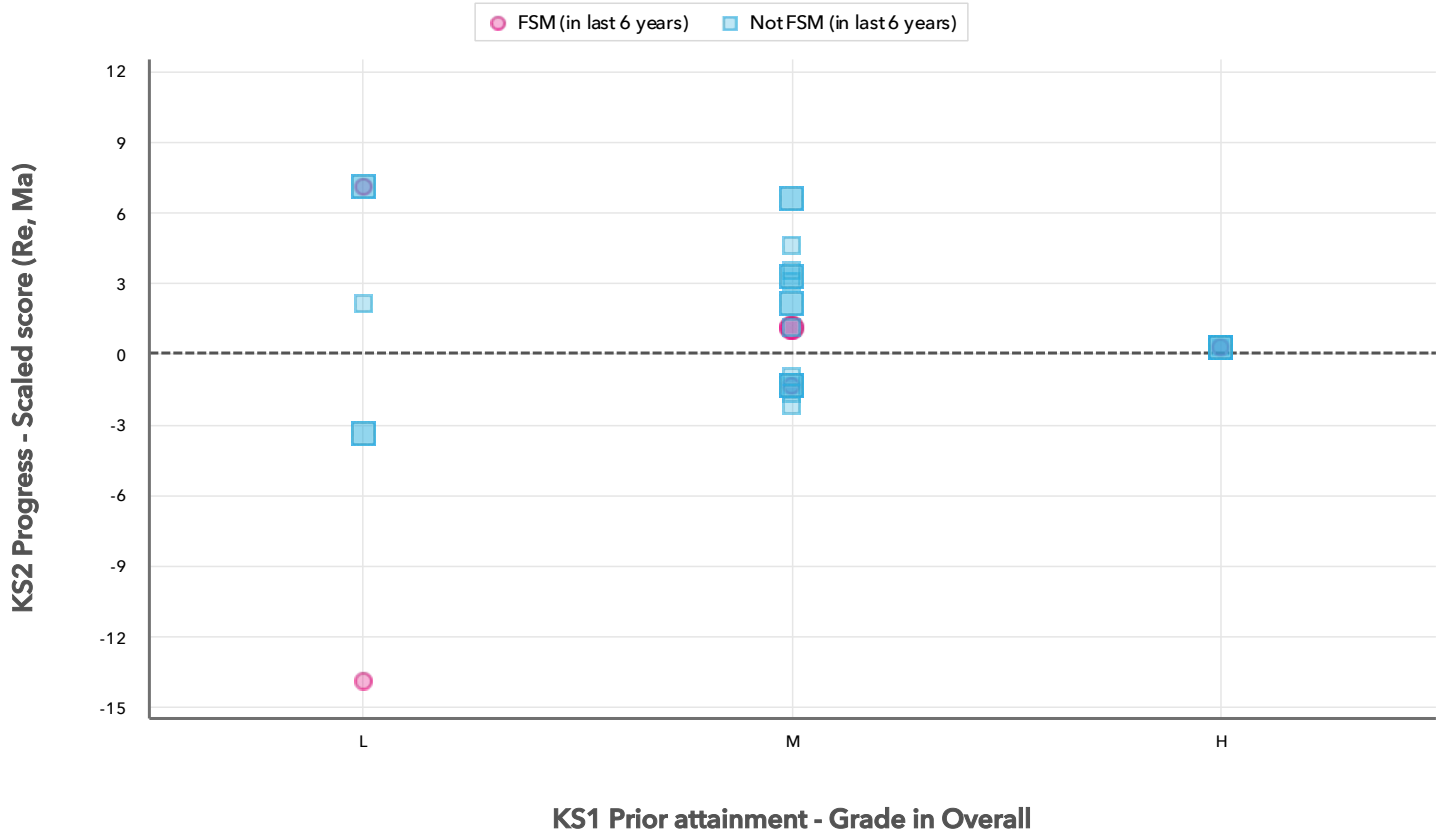
2020 self-evaluation reports have been calculated using the teacher assessments provided by schools as part of the FFT Results Service. ?

Sacred Heart Primary School

2020 KS2

Scatterplot

KS2 Pupil scatterplot 2020 31 pupils highlighted by Pupil Premium



Context data has been produced using either the data supplied by schools as part of the FFT 2020 Results Service or from the latest census data provided by the DfE. [?](#)

Sacred Heart Primary School

2020 KS2

Context

Context · Year 6

		Pupils		Comparative profile 2019 / 2020		Absence during Key Stage 2		Persistent absence during Key Stage 2	
		School	School	National	School	National	School	National	
Summary	All Pupils	31	100%	100%	-	-	-	-	
Gender	Male	13	42%	51%	-	-	-	-	
	Female	18	58%	49%	-	-	-	-	
FFT Prior Attainment	Higher attainers	5	16%	15%	-	-	-	-	
	Middle attainers	19	61%	61%	-	-	-	-	
	Lower attainers	7	23%	19%	-	-	-	-	
Pupil Premium	FSM (in last 6 years)	6	19%	30%	-	-	-	-	
	Not FSM (in last 6 years)	25	81%	70%	-	-	-	-	
FSM	FSM	6	19%	21%	-	-	-	-	
	Not FSM	25	81%	78%	-	-	-	-	
FSM Ever	FSM (ever)	5	16%	30%	-	-	-	-	
	Not FSM (ever)	26	84%	69%	-	-	-	-	
Term of Birth	Autumn Term	10	32%	34%	-	-	-	-	
	Spring Term	13	42%	32%	-	-	-	-	
	Summer Term	8	26%	34%	-	-	-	-	
SEN Group	SEN Support	6	19%	15%	-	-	-	-	
	EHC Plan	1	3%	2%	-	-	-	-	
	No SEN	24	77%	82%	-	-	-	-	
EAL	First language not English	10	32%	25%	-	-	-	-	
	First language English	21	68%	74%	-	-	-	-	
Mobility	Joined before Y5	31	100%	93%	-	-	-	-	
Ethnicity	White	21	68%	69%	-	-	-	-	
	Black African	3	10%	6%	-	-	-	-	
	Indian	4	13%	3%	-	-	-	-	
	Other Asian	3	10%	3%	-	-	-	-	